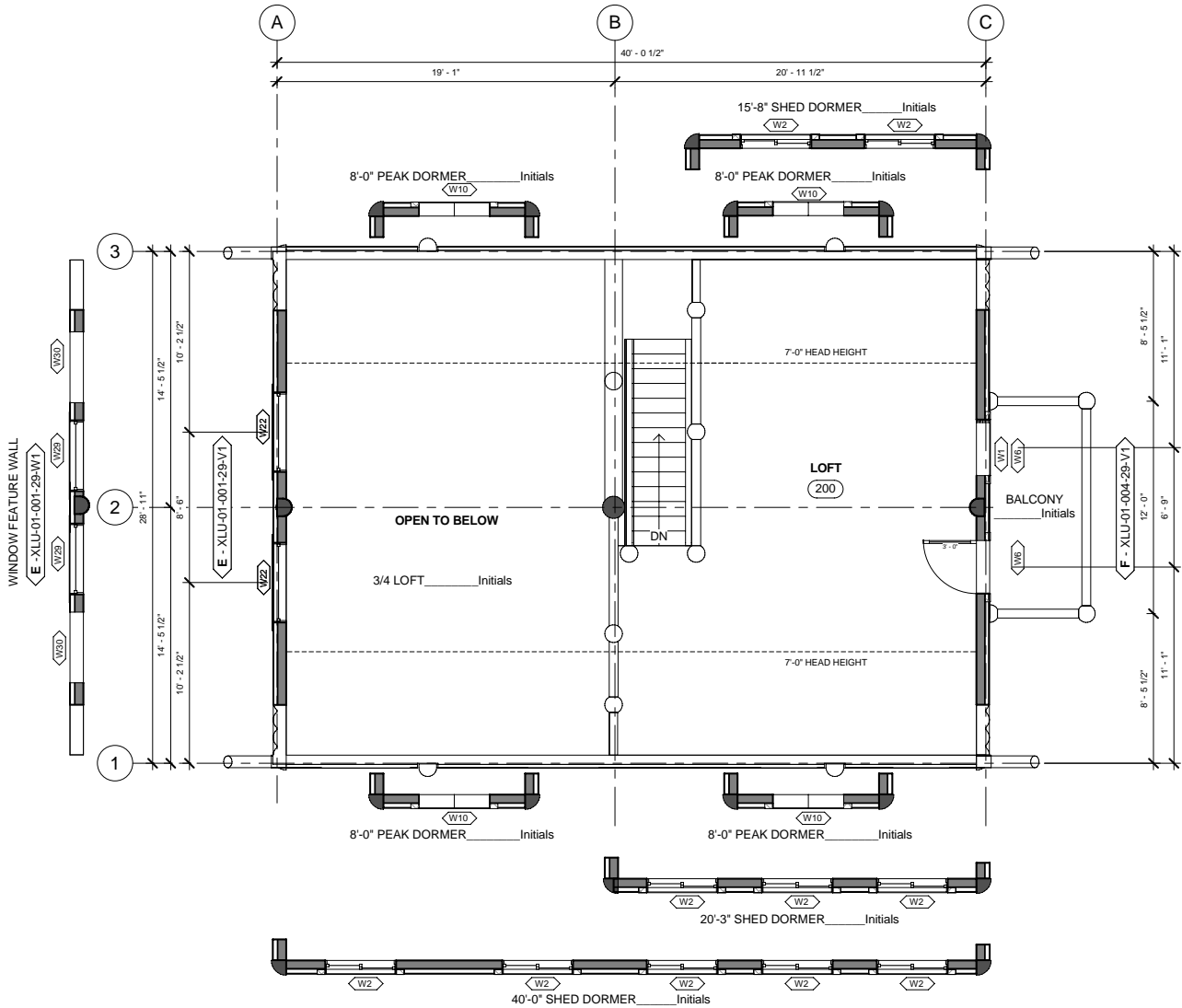


17 MARCH 2006  
**WHISPER CREEK** LOG HOMES  
**BIG HORN LOFT 1**  
 SCALE: 1" = 10'-0"

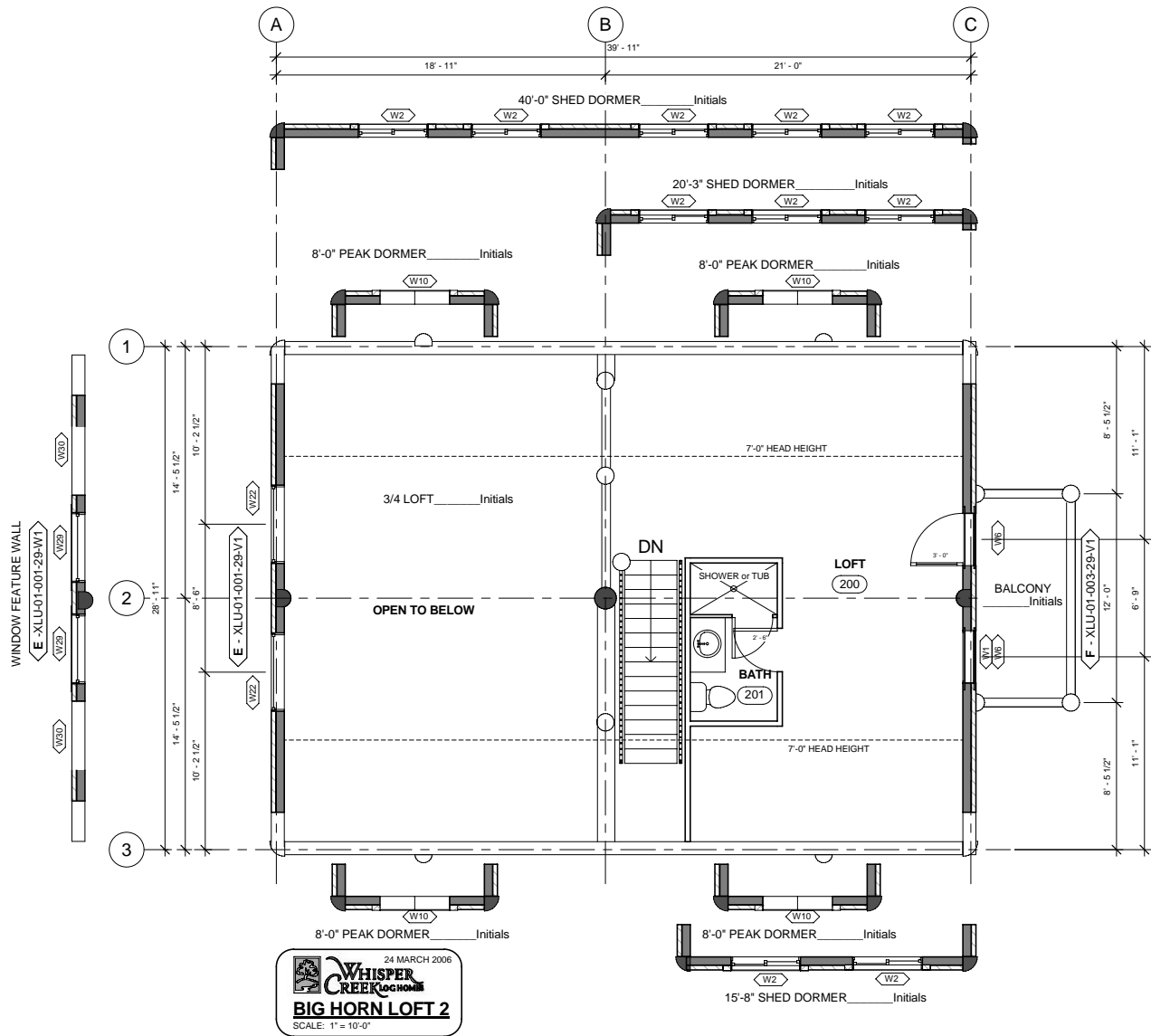
375 SQ FT (> 5 FT)  
 552 SQ FT TOTAL  
 OPTIONS SHOWN  
 BALCONY  
 OPTIONS AVAILABLE  
 DORMER OPTIONS SHOWN  
 WINDOW FEATURE WALL  
 PLANS AS SHOWN WORKS WITH BIG HORN 1, 2, 4, 8, 9, 10,  
 BECAUSE OF STAIR DIRECTION.



17 MARCH 2008  
**WHISPER CREEK LOG HOMES**  
**BIG HORN LOFT 1 M**  
 SCALE: 1" = 10'-0"

375 SQ FT (> 5 FT)  
 552 SQ FT TOTAL

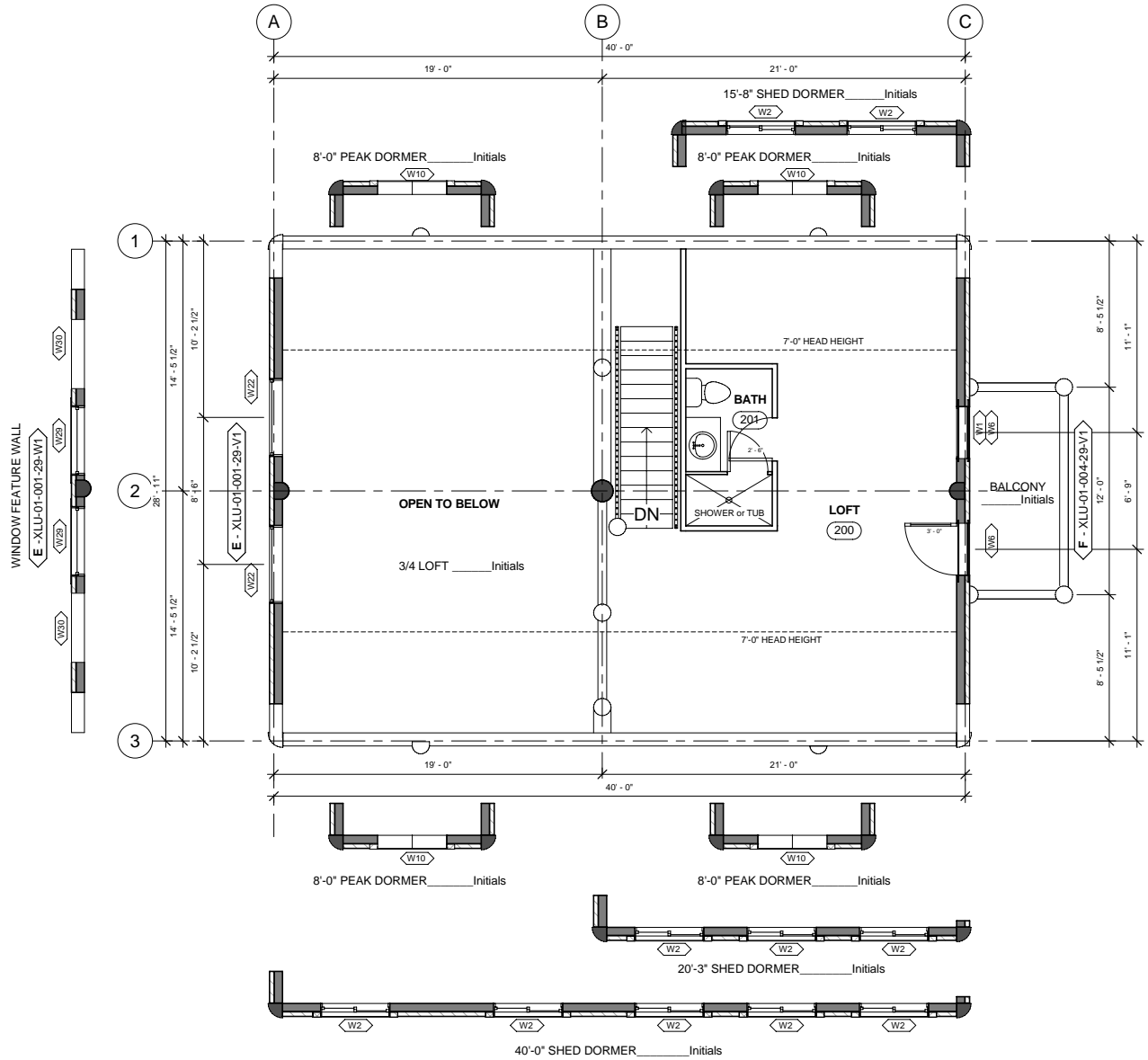
OPTIONS SHOWN  
 BALCONY  
 OPTIONS AVAILABLE  
 DORMER OPTIONS SHOWN  
 WINDOW FEATURE WALL  
 PLANS AS SHOWN WORKS WITH BIG HORN 3, 5, 6, & 7,  
 BECAUSE OF STAIR DIRECTION



24 MARCH 2006  
**WHISPER CREEK LOG HOMES**  
**BIG HORN LOFT 2**  
 SCALE: 1" = 10'-0"

375 SQ FT (> 5 FT)  
 552 SQ FT TOTAL

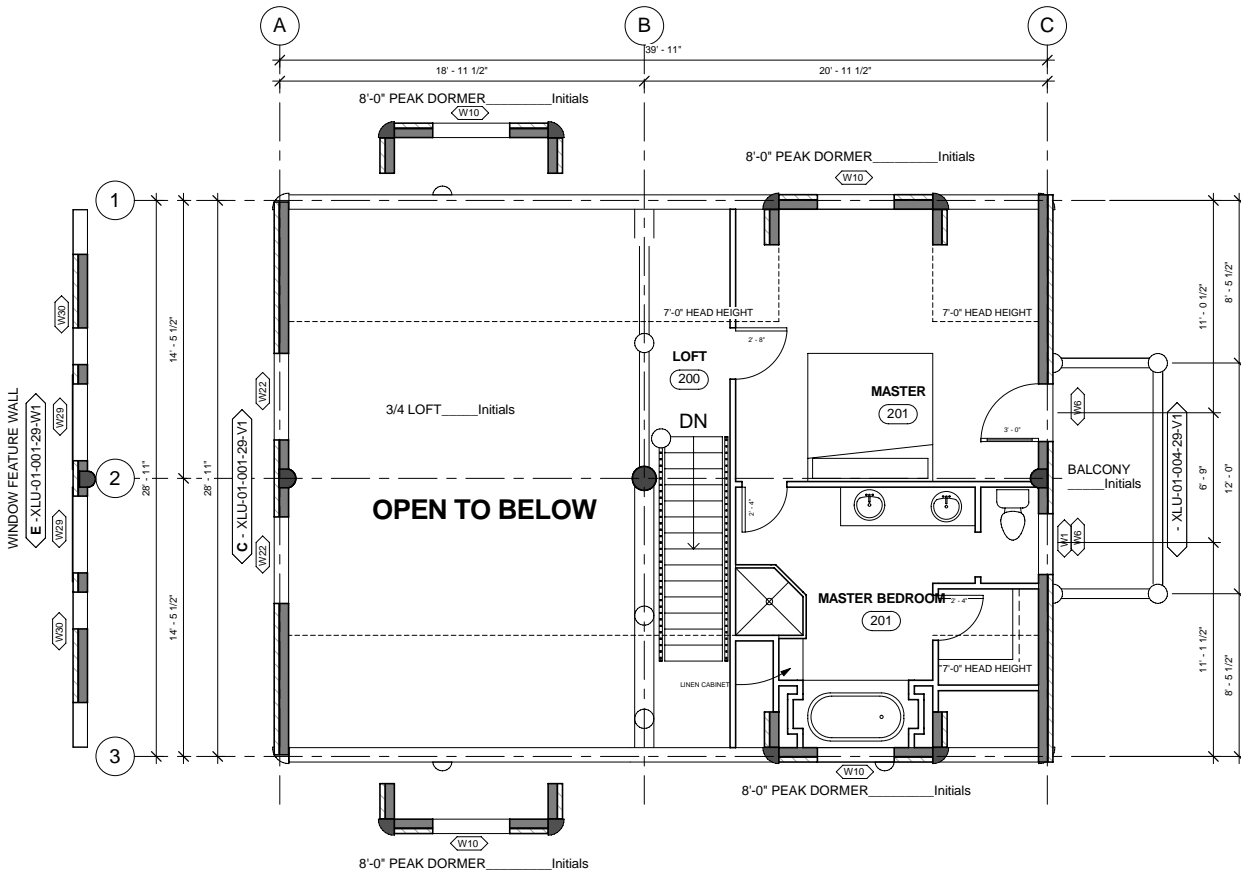
- OPTIONS SHOWN  
 BALCONY  
 OPTIONS AVAILABLE  
 DORMER OPTIONS SHOWN  
 WINDOW FEATURE WALL  
 PLANS AS SHOWN WORKS WITH BIG HORN 1, 2, 4, 8, 9, 10,  
 BECAUSE OF STAIR DIRECTION.



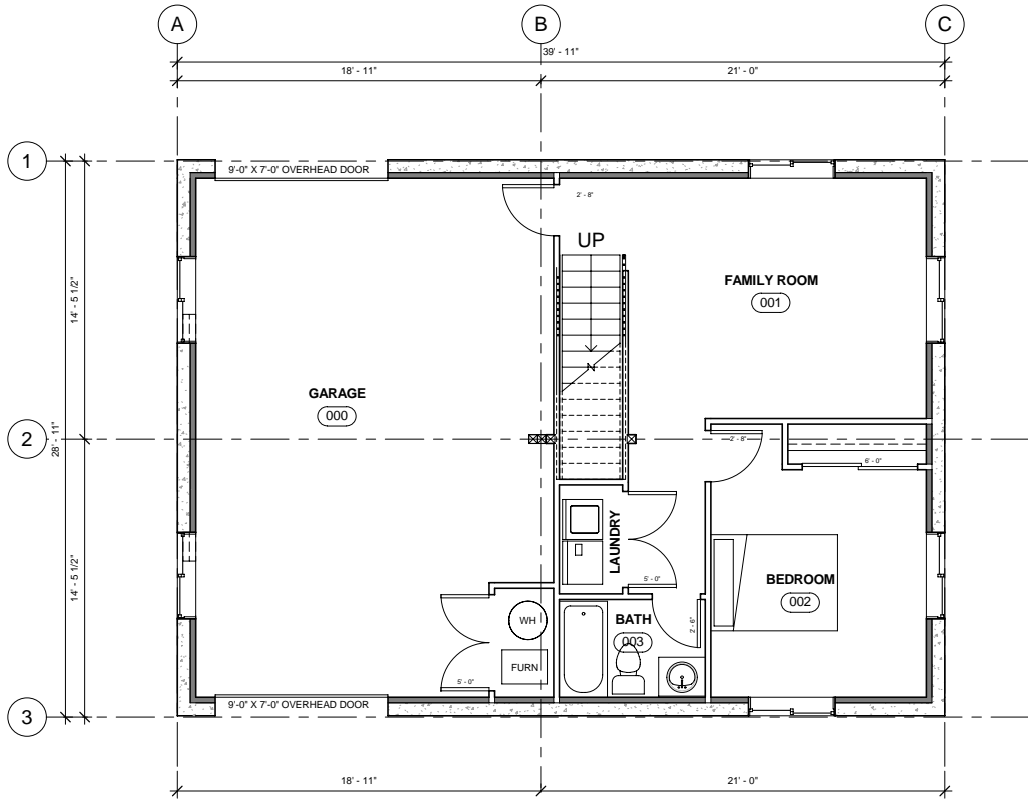
17 MARCH 2006  
**WHISPER CREEK** LOC HOMES  
**BIG HORN LOFT 2M**  
 SCALE: 1" = 10'-0"

375 SQ FT (> 5 FT)  
 552 SQ FT TOTAL

OPTIONS SHOWN  
 BALCONY  
 OPTIONS AVAILABLE  
 DORMER OPTIONS SHOWN  
 WINDOW FEATURE WALL  
 PLANS AS SHOWN WORKS WITH BIG HORN 3, 5, 6, & 7,  
 BECAUSE OF STAIR DIRECTION.

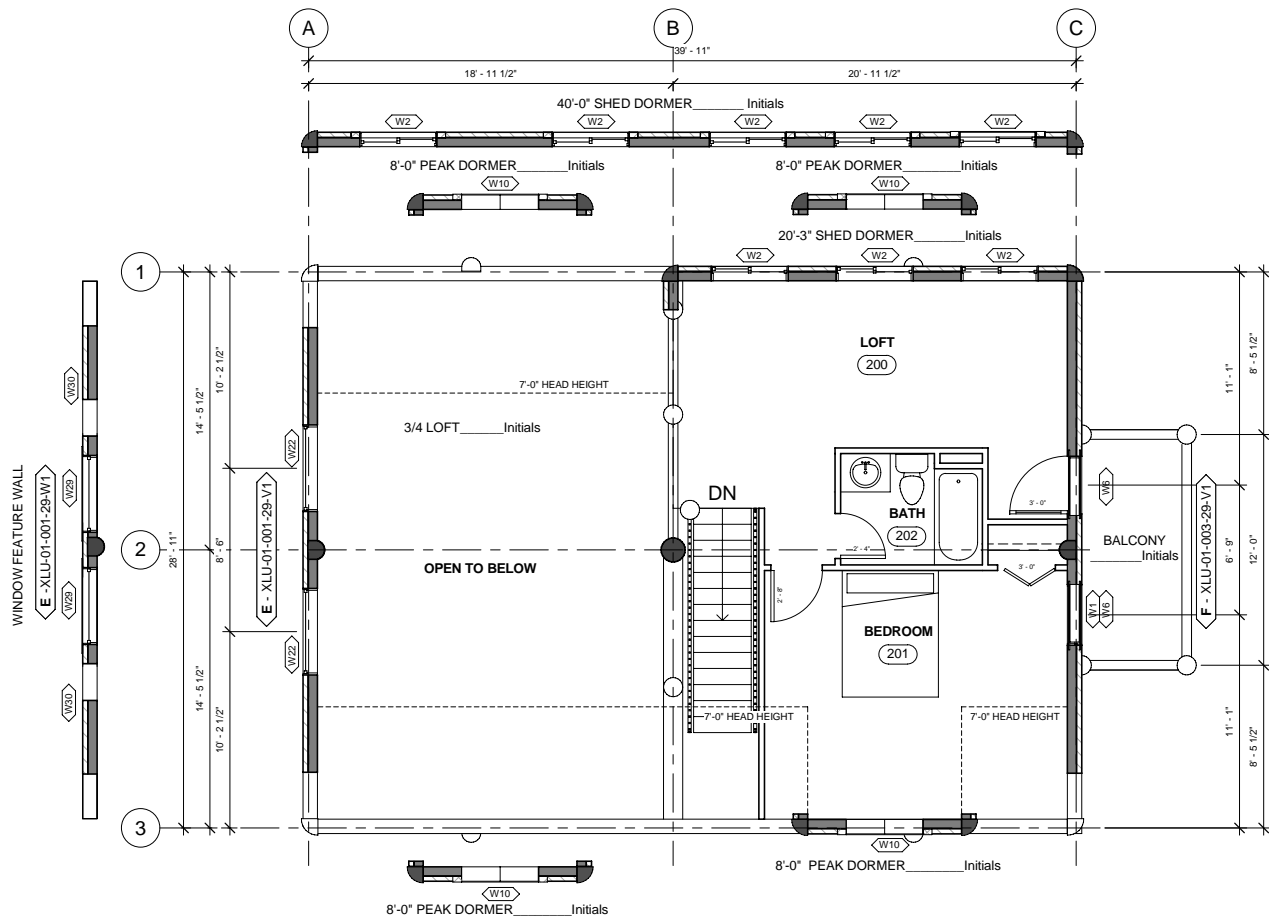


**OPTIONS SHOWN**  
 BALCONY  
 DORMERS SHOWN  
**OPTIONS AVAILABLE**  
 WINDOW FEATURE WALL  
 PLANS AS SHOWN WORKS WITH BIG HORN 3, 5, 6, 7.  
 PLAN WILL BE MIRRORED TO WORK WITH OTHERS.



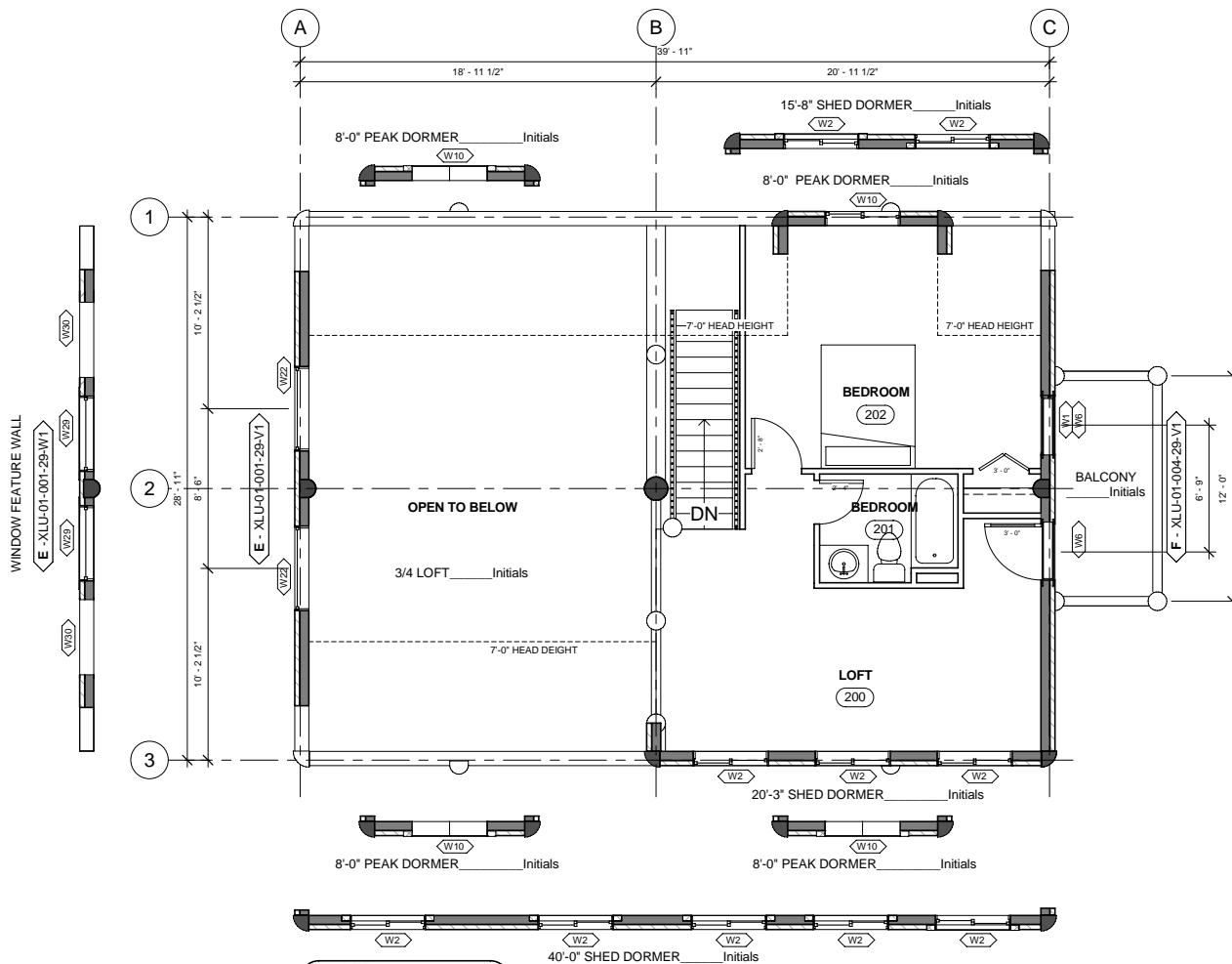
23 MARCH 2006  
 WHISPER CREEK HOMES  
**BIG HORN BSMT 3M**  
 SCALE: 1" = 10'-0"

MAIN-580 SQ FT  
 GARAGE-580 SQ FT  
 PLAN AS SHOWN WORKS WITH BIG HORNS 1, 2, 4, 8, 9, & 10,  
 BECAUSE OF STAIR DIRECTION.



16 MARCH 2006  
**WHISPER CREEK LOG HOMES**  
**BIG HORN LOFT 4**  
 SCALE: 1" = 10'-0"

506 SQ FT (- 5 FT)  
 552 SQ FT TOTAL  
 OPTIONS SHOWN  
 BALCONY  
 DORMERS SHOWN  
 OPTIONS AVAILABLE  
 DORMER OPTIONS SHOWN  
 WINDOW FEATURE WALL  
 PLANS AS SHOWN WORKS WITH BIG HORN 1, 2, 4, 8, 9, 10,  
 BECAUSE OF STAIR DIRECTION.



17 MARCH 2006  
 WHISPER CREEK LOG HOMES  
**BIG HORN LOFT 4M**  
 SCALE: 1" = 10'-0"

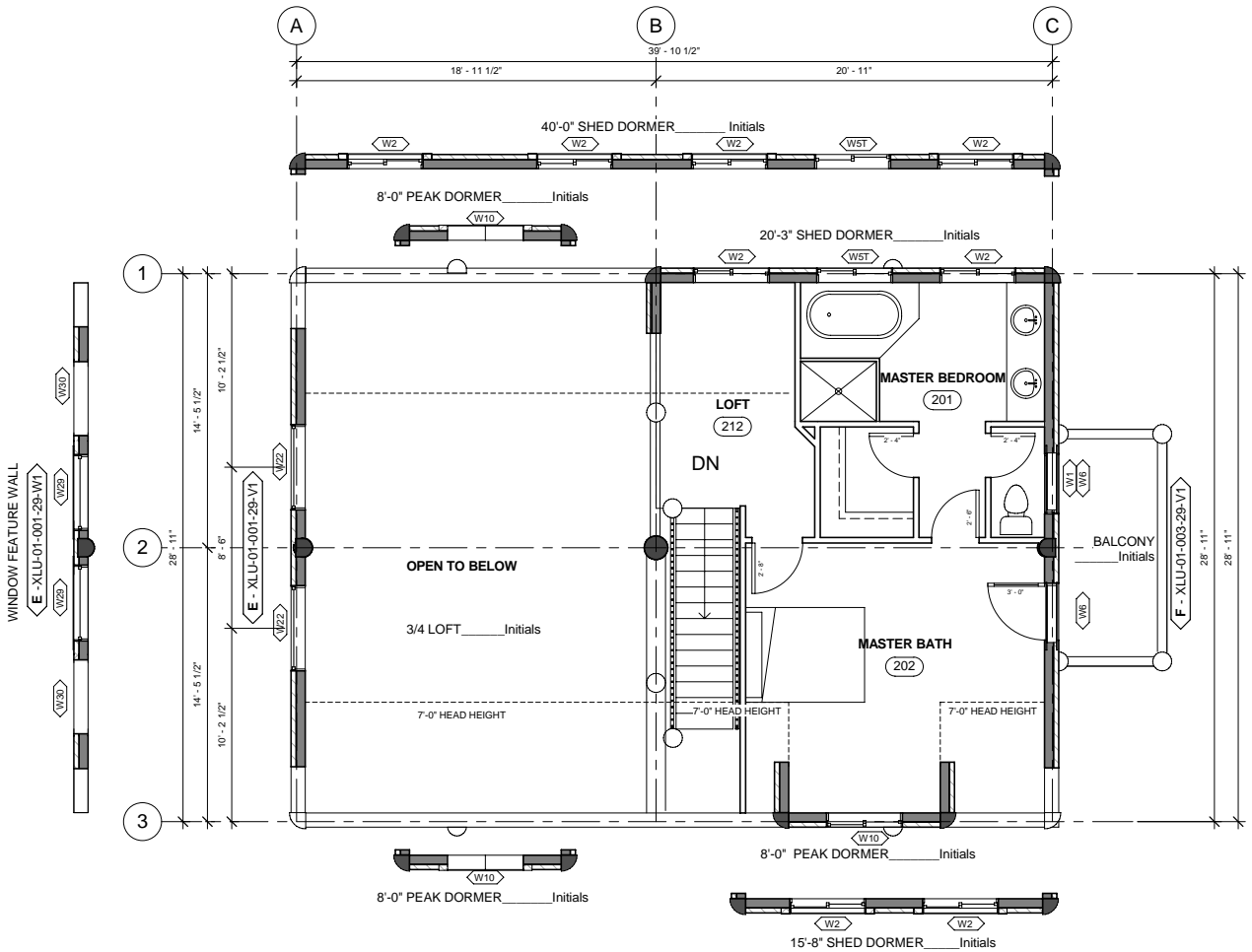
506 SQ FT (> 5 FT)  
 552 SQ FT TOTAL

- OPTIONS SHOWN
- BALCONY
- DORMERS SHOWN
- OPTIONS AVAILABLE
- DORMER OPTIONS SHOWN
- WINDOW FEATURE WALL
- PLANS AS SHOWN WORKS WITH BIG HORN 3, 5, 6, & 7,  
 BECAUSE OF STAIR DIRECTION.





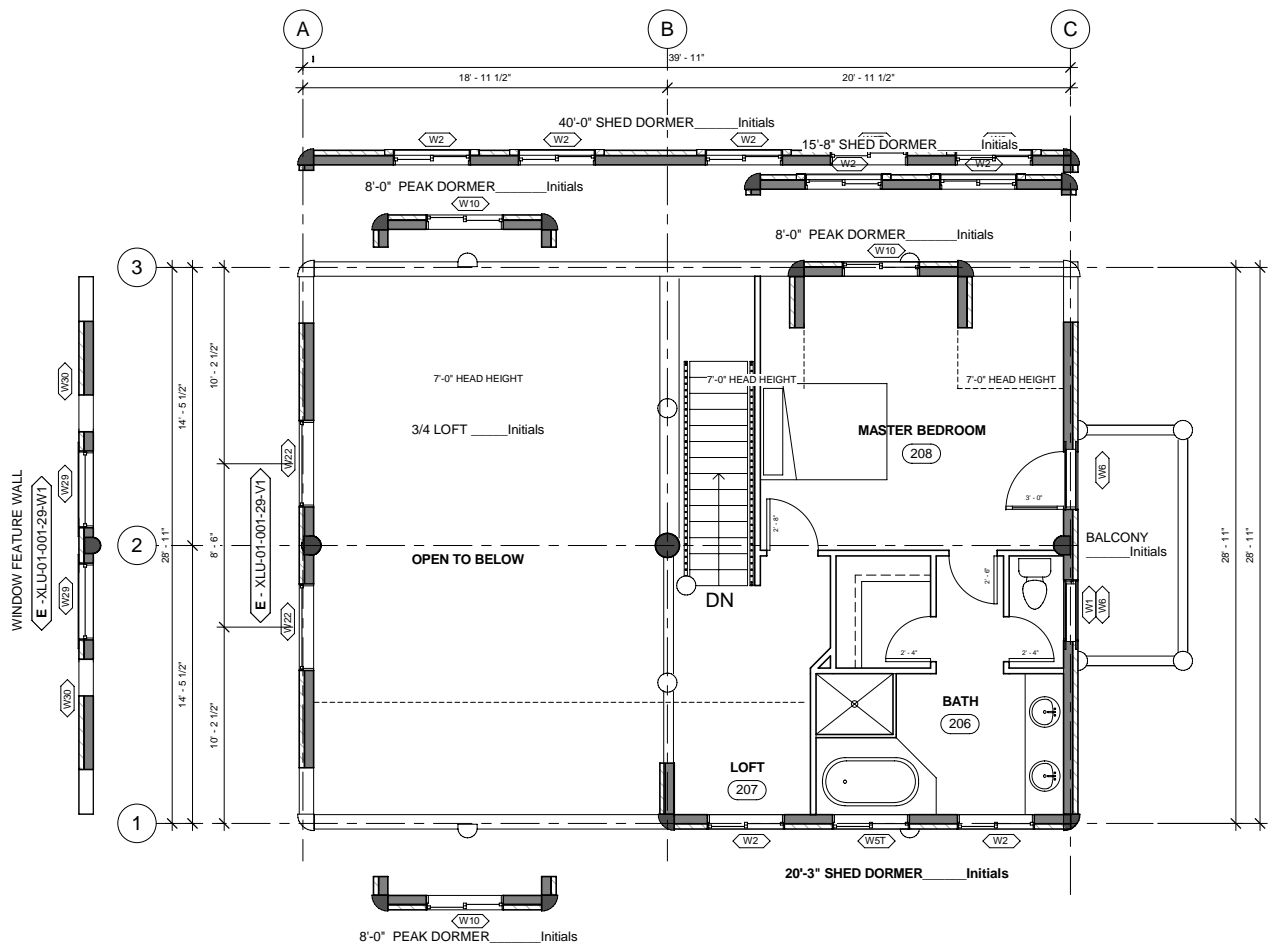




24 MARCH 2006  
**WHISPER CREEK LOG HOMES**  
**BIG HORN LOFT 6**  
 SCALE: 1" = 10'-0"

484 SQ FT (~5 FT)  
 552 SQ FT TOTAL

OPTIONS SHOWN  
 BALCONY  
 DORMERS SHOWN  
 OPTIONS AVAILABLE  
 DORMER OPTION SHOWN  
 WINDOW FEATURE WALL  
 PLANS AS SHOWN WORKS WITH BIG HORN 3, 5, 6, & 7,  
 BECAUSE OF STAIR DIRECTION.



23 MARCH 2006  
 WHISPER CREEK LOG HOMES  
**BIG HORN LOFT 6M**  
 SCALE: 1" = 10'-0"

484 SQ FT (> 5 FT)  
 552 SQ FT TOTAL

- OPTIONS SHOWN  
 BALCONY  
 DORMERS SHOWN  
 OPTIONS AVAILABLE  
 DORMER OPTION SHOWN  
 WINDOW FEATURE WALL  
 PLANS AS SHOWN WORKS WITH BIG HORN 1, 2, 4, 8, 9, &  
 10, BECAUSE OF STAIR DIRECTION